



2RU Front Test CPRI Ports – Rear RRH/Spares/BBU ports with Slack Mgt.

APPLICATIONS

Common Public Radio Interface (CPRI) was developed to allow Radio Frequency (RF) to be delivered over fiber. CPRI can be utilized at next generation cell sites using fiber-to-the-antenna (FTTA), where the baseband unit (BBU) is placed at the base of the tower and fiber feeds the remote radio heads. The CPRI link connects the remote units to the baseband. Current testing requires a tower climb. With the recent development of base station analyzers, field techs can now gain access to RF signals and the spectrum without having to climb the tower. The analyzers can be used with distributed antenna systems (DAS), small cells, hybrid sites and macro cellular locations. Validating and debugging CPRI links between devices such as remote radio heads (RRH) and BBU's has become much easier and less costly. Such testing requires a CPRI Interface Test Panel (ITP).

The Cablcon CPRI ITP is installed between the Optical CPRI BBU and the RRH. The ITP allows carriers to view and troubleshoot RF interference within the uplink Rx spectrum. The test panel provides non-service affecting monitor ports for which a protocol analyzer can be used to decode the transmit data stream from an active antenna.



FEATURES & BENEFITS

- Rectangular shaped modules with test ports located on the front with the RRH and BBU ports on the rear allowing for hybrid cable storage
- 2RU enclosure able to accommodate up to (3) test modules or (18) test ports
- May order enclosure chassis and populate with modules as network requires saving budget for additional sites
- Reduced module depth and increased panel depth to allow for management of hybrid cable
- Double stacked management spools for hybrid cable
- Removable BBU fiber protection channel
- Modules with frontal ports 2" from access door allowing for parking lot dust plugs and future permanent test cords
- Directory for fiber path routing & labeling
- Reversible rack mounting ears for 19" & 23" wide frames
- Robust powder coat steel construction
- Manufactured in the USA in our ISO 9001 and TL 9000 Certified plants

DALLAS • DETROIT

Corporate Offices: 359 Robbins Drive • Troy, MI 48083-4561
Phone: 888.8.CABLCON • Fax: 248.588.1462 • www.cablcon.com

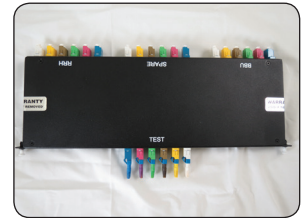




2RU Front Test CPRI Ports – Rear RRH/Spares/BBU ports with Slack Mgt.

TESTING & VERIFICATION

- Manufacturing process driven through a Control Plan
- Consecutive inspections throughout the manufacturing process
- All points of connection are tested for Insertion and Return Loss (IL/RL)
- Validation testing to 3dB split 50/50 is correct (+/- .3dB, >-50dB Back Reflection)
- All points of connection tested for End Face Cleanliness (EFC) to IEC standard IEC-61300-3-35 using digital mapping software
- Proprietary fiber mapping process as first level quality assurance for port-to-port continuity
- VFL (laser source) introduced into each splitter (IN) port to verify location of the 50/50 test ports.



Description - Full Systems	Part Number
2RU CPRI Test 3 Module Capacity w/1 Module Slack Mgt. w/6 SM Duplex Jumpers 2M	CPRI-2SM1-2M
2RU CPRI Test 3 Module Capacity w/1 Module Slack Mgt. w/6 SM Duplex Jumpers 3M	CPRI-2SM1-3M
2RU CPRI Test 3 Module Capacity w/1 Module Slack Mgt. w/6 SM Duplex Jumpers 5M	CPRI-2SM1-5M
2RU CPRI Test 3 Module Capacity w/1 Module Slack Mgt. w/6 SM Duplex Jumpers 7M	CPRI-2SM1-7M
2RU CPRI Test 3 Module Capacity w/2 Module Slack Mgt. w/12 SM Duplex Jumpers 2M	CPRI-2SM2-2M
2RU CPRI Test 3 Module Capacity w/2 Modules Slack Mgt. w/12 SM Duplex Jumpers 3M	CPRI-2SM2-3M
2RU CPRI Test 3 Module Capacity w/2 Modules Slack Mgt. w/12 SM Duplex Jumpers 5M	CPRI-2SM2-5M
2RU CPRI Test 3 Module Capacity w/2 Modules Slack Mgt. w/12 SM Duplex Jumpers 7M	CPRI-2SM2-7M
2RU CPRI Test 3 Module Capacity w/3 Modules Slack Mgt. w/18 SM Duplex Jumpers 2M	CPRI-2SM3-2M
2RU CPRI Test 3 Module Capacity w/3 Modules Slack Mgt. w/18 SM Duplex Jumpers 3M	CPRI-2SM3-3M
2RU CPRI Test 3 Module Capacity w/3 Modules Slack Mgt. w/18 SM Duplex Jumpers 5M	CPRI-2SM3-5M
2RU CPRI Test 3 Module Capacity w/3 Modules Slack Mgt. w/18 SM Duplex Jumpers 7M	CPRI-2SM3-7M

Description - Modular Systems	Part Number
Slack Management (Rectangle) Test Module w/6 SM Duplex Jumpers 2M	CPRI-CASS24-2M
Slack Management (Rectangle) Test Module w/6 SM Duplex Jumpers 3M	CPRI-CASS24-3M
Slack Management (Rectangle) Test Module w/6 SM Duplex Jumpers 5M	CPRI-CASS24-5M
Slack Management (Rectangle) Test Module w/6 SM Duplex Jumpers 7M	CPRI-CASS24-7M
Empty 2 RU Slack Management Panel -Holds up to 3 Slack Management Modules	CPRI-2SM0
Kit of 6 SM Duplex Jumpers 2M	CPRI-6LCLC-2M
Kit of 6 SM Duplex Jumpers 3M	CPRI-6LCLC-3M
Kit of 6 SM Duplex Jumpers 5M	CPRI-6LCLC-5M
Kit of 6 SM Duplex Jumpers 7M	CPRI-6LCLC-7M
Blank Strip	CPRI-BLANK

Specifications

Dimensions: 17"W x 16"D x 3.50"H
 Material: Enclosure, Cover, Module and Door Steel
 Connector Style: LC/UPC Duplex LC Bulkheads; (Blue, Violet, Green, Brown, Yellow, White)

Weight: 14 lbs.
 Coating: Electrostatically applied powder coat
 Modular Couplers: 1x2; 50:50 Split; 9/125um

DALLAS • DETROIT

Corporate Offices: 359 Robbins Drive • Troy, MI 48083-4561
 Phone: 888.8.CABLCON • Fax: 248.588.1462 • www.cablcon.com

