

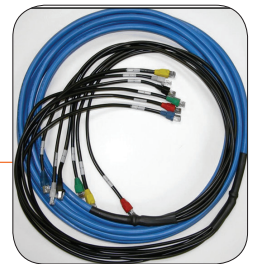


Ethernet & T1 Cell Tower Backhaul Cables (EBH)

Cablcon is an ISO 9001 and TL 9000 Certified manufacturer of custom broadband solutions. Formed in 1986, the company has evolved to manufacture fiber optic management solutions, passive fiber optic equipment and high quality copper and fiber assemblies.

The Cablcon multi-leg preformed Category 5e (C5e) EBH solution allows for direct connection from your EVDO or BTS equipment to the router and comes in a variety of configurations, each designed to fit your cabling requirement while enhancing the fit and finish of your installation.

Each assembly is manufactured in a controlled environment at one of our domestic ISO 9001 and TL 9000 Certified facilities. Each termination is tested and certified to ETI/TIA C5 electrical requirements.



SPECIFICATIONS

- Colors: Multiple colors available. Cable striping available upon request.
- Cable: C5e shielded (STP) or unshielded (UTP), OEM dependent w/an OD of .53".
- Length: Assembly length is measured tip-to-tip (including breakout).
- Breakout: Fan-out or breakout available upon request. Common breakout length is 42" each end, with 42" and 60" for compact sites and 24" Single Ended (SE) for referenced T1 site.

FEATURES & BENEFITS

- Assemblies are built and tested in a controlled environment, eliminating costly field work of termination, test, scrap and potential rework.
- Single 25 pair C5e cable reduces space in th rack, installation time and the need for innerduct.
- Cables are available in a variety of configurations, depending on equipment requirement and breakout (fan-out), enhancing fit & finish.
- A variety of jacket colors are available so that the assembly may easily be identified in rack point to point.
- Modular C5e connectors are uniquely color coded with snagless boots for ease of identification and installation.
- Custom kits (fiber, hardware and copper cable) and lengths are available upon request.

Cablcon Part Number	Description
T1906-0083-xxx	6-Leg RJ45/RJ45 C5e UTP Green 42" Fan-Out each end x'
T1906-0084-xxx	6-Leg RJ45/RJ45 C5e UTP Blue 42" Fan-Out each end x'
T1906-0116-xxx	6-Leg RJ45/RJ45 C5e UTP Blue 42"/60" Fan-Outs x'
T1906-0114-xxx	8-Leg RJ45/SE C5e STP Blue 24" Fan-Out to blunt single end x'
T1906-0112-xxx	6-Leg RJ45/RJ45 C5e STP Gray 36" Fan-Out each end x'
T1906-0113-xxx	6-Leg RJ45/RJ45 C5e STP Blue 36" Fan-Out each end x'
T1906-0117-xxx	6-Leg RJ45/RJ45 C5e STP Green 36" Fan-Out each end x'

