



COPPER & FIBER CABLES ... Get Connected, *RIGHT* on Time!

76 Series Variable Optical Attenuator Patchcords

CABLCON VOA Patchcords utilize both collimated and air-gap technologies to allow a variety when choosing the product that will perform to the requirements needed.

We also offer the Mid-Range Air-Gap VOA for a more economical product where a wide attenuation range is not required.

Applications:

- LAN, WAN & Metro Networks
- Telecommunication
- Networks
- Passive Optical Networks
- Test & Measurement Systems
- CATV
- Optical Patch Panels

Overview:

- Singlemode and Multimode VOA's
- Optical performance 100% factory tested
- SPC, UPC, and APC available for Singlemode applications
- Low Insertion loss and low Back Reflection
- Meets Telcordia GR-CORE 326 and 910
- High temperature performance
- Environmentally stable
- Small package sizes

Specifications: Collimated

Operating Wavelength (nm)		1200—1600
Residual Attenuation (dB)	Maximum	1.5
Attenuation Range (dB)		1.5 to 45
Resolution (dB)	Maximum	0.15
Optical Return Loss (dB)	Minimum	55
Polarization Sensitivity (dB)	Maximum	0.20
Operating Temperature (°C)		0 to +60
Storage Temperature (°C)		-40 to +75
Thermal Stability (dB/°C)	Maximum	0.03
Optical Power (mW)	Maximum	300

Specifications: Air-Gap

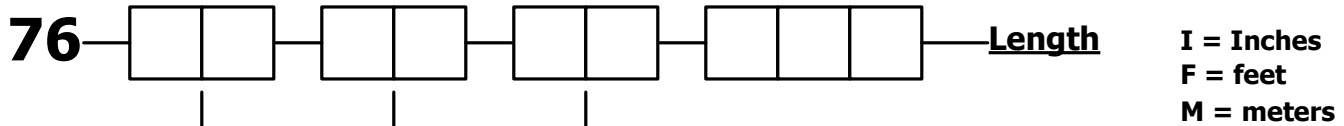
Operating Wavelength (nm)		1200—1600
Residual Attenuation (dB)	Maximum	1.5
Attenuation Range (dB)		1.5 to 40
Attenuation Mid-Range 1	dB	0.5 to 12
Attenuation Mid-Range 2	dB	0.5 to 20
Resolution (dB)	Maximum	0.15
Optical Return Loss (dB)	Minimum	55
Polarization Sensitivity (dB)	Maximum	0.20
Operating Temperature (°C)		0 to +60
Storage Temperature (°C)		-40 to +75
Thermal Stability (dB/°C)	Maximum	0.03
Optical Power (mW)	Maximum	300



ISO 9001:2000 and TL 9000 Certified



PART NUMBER ORDERING INFORMATION



Fiber Type

S8 = Singlemode
M6 = Multimode 62.5/125um
M5 = Multimode 50/125um

Connector Type

Type	Singlemode	Multimode
LC	L	M
SC	T	Z
SC/APC	Q	N/A
SC 90° Boot	C	N/A
FC	P	E
FC/APC	U	N/A
ST	R	G
SMA 906	N/A	N
SMA 905	N/A	A
No Conn.	0 (zero)	0 (zero)

VOA Type

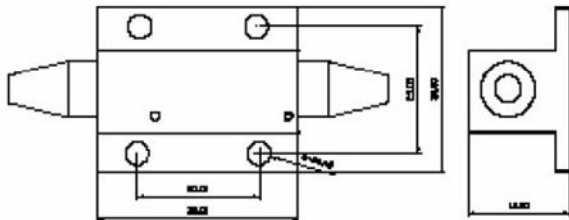
C9 = Collimated, 900um
C3 = Collimated, 3mm
A9 = Air-Gap, 900um
A3 = Air-Gap, 3mm
M0 = Mid-Range 0.5~12dB, 3mm, Singlemode Only
M3 = Mid-Range 0.5~12dB, 900um, Singlemode Only
M2 = Mid-Range 0.5~12dB, 2mm, Singlemode Only
M4 = Mid-Range 0.5~20dB, 3mm Singlemode Only
M7 = Mid-Range 0.5~20dB, 900um, Singlemode Only
M8 = Mid-Range 0.5~20dB, 2mm, Singlemode Only

Example:

Singlemode Collimated 3mm, SC, 1 meter length NOTE: Length indicates total length of patchcord
76-C3-S8-TT-001M

Contact **CABLCON** for Custom VOA Patchcords

Collimated Dimension:



Air Gap Dimensions:

